

User Manual

AdvanceCall™ Box Xtreme



ADVANCETEC
INDUSTRIES INC

www.advancetec.com



*CLAMPS
NOT INCLUDED



TOOL INCLUDED



1



AdvanceCall Box Xtreme Part #..... AT8557A



Index

Page	Details
3	Internal Rechargeable Battery
3-7	Connecting Battery
8-10	Installation of Call Box.
11	Operating AdvanceCall™ Box
12	Specifications



Note! The AdvanceCall™ Box Integrated System requires an activation onto the CDMA or GSM Network. To arrange for activation onto the CDMA or GSM Network contact your local CDMA or GSM Provider sales representative or retail store.

■ INTERNAL RECHARGEABLE BATTERY

The AdvanceCall™ Box has an internal rechargeable battery which will provide up to 24 hours of standby power to the AdvanceCall™ Box in the event of the loss of power.





Diagram 1



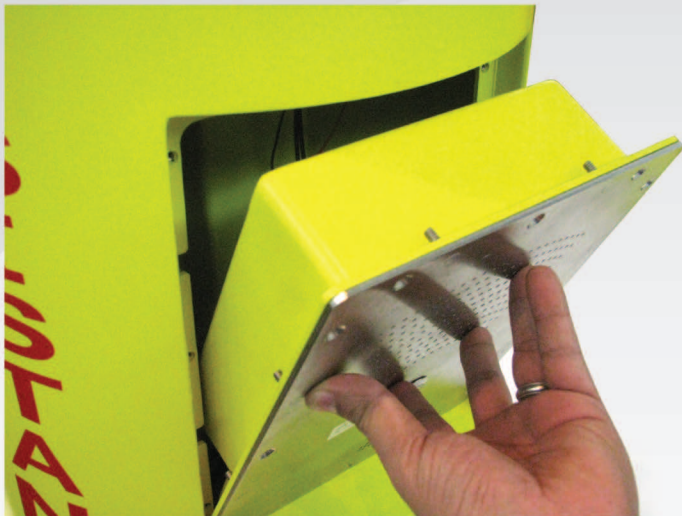
REMOVE WITH
TOOL SUPPLIED BY
ADVANCETEC
(FIGURE A)

■ CONNECTING THE INTERNAL RECHARGEABLE BATTERY & AC POWER SUPPLY

1. Remove the cover plate on the front of the AdvanceCall Box™ by removing the 12 screws holding it in place. Keep the screws as they will be needed to secure the plate back in place. **(Diagram 1)**



Diagram 2

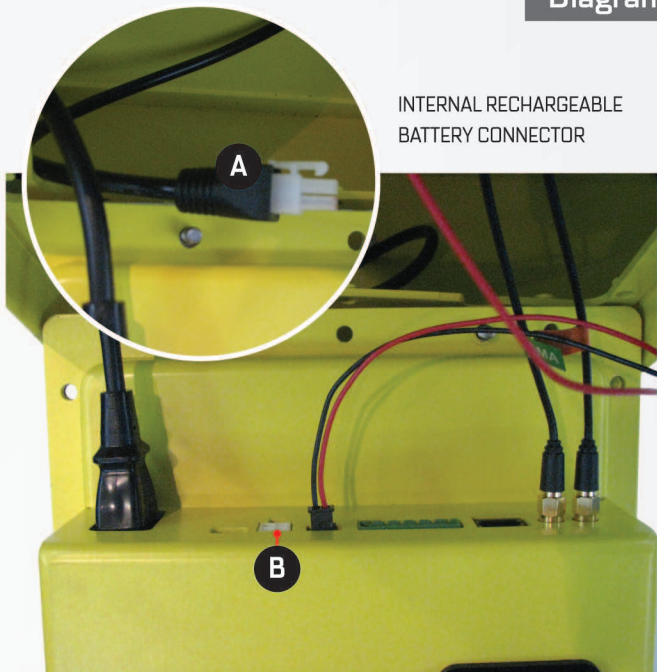


2. Carefully open the cover, make sure to open from top to bottom.
[Diagram 2]

3. Access the bottom of the back plate to connect the rechargeable backup battery **[A]** to the input **[B]** on the main panel. **[Diagram 3]**



Diagram 3

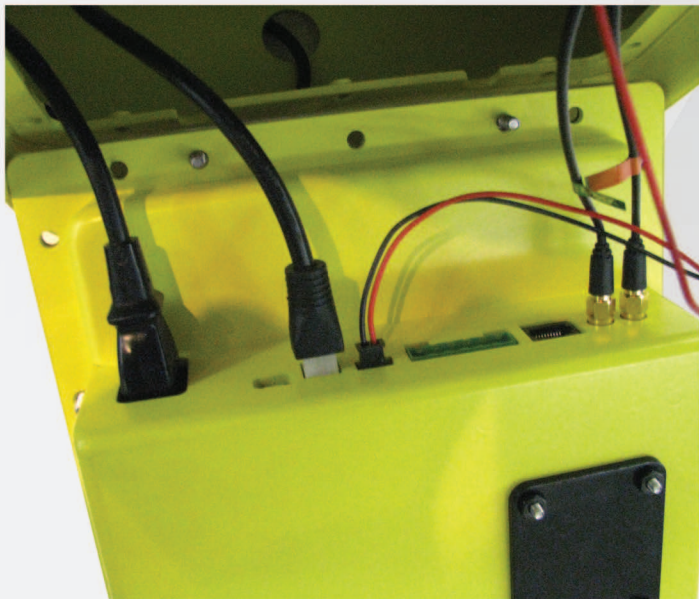


INTERNAL RECHARGEABLE
BATTERY CONNECTOR

INSIDE VIEW OF PLATE



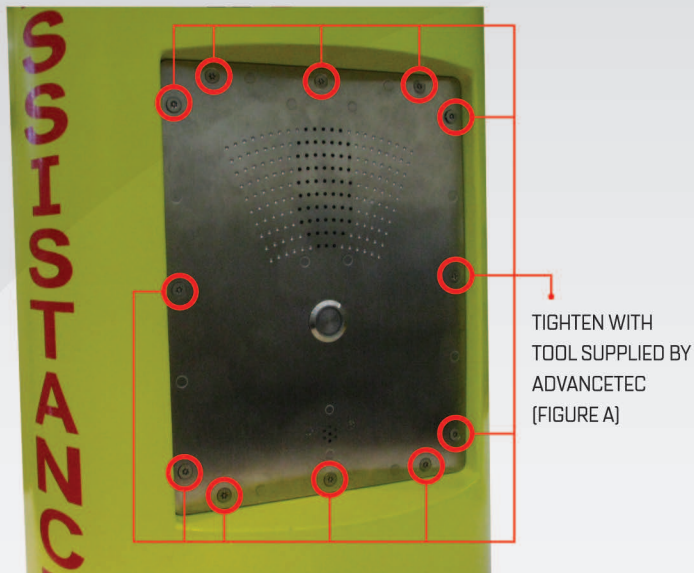
Diagram 4



5. Once battery has been connected to main panel **[Diagram 4]**. Screw plate back into place.



Diagram 5

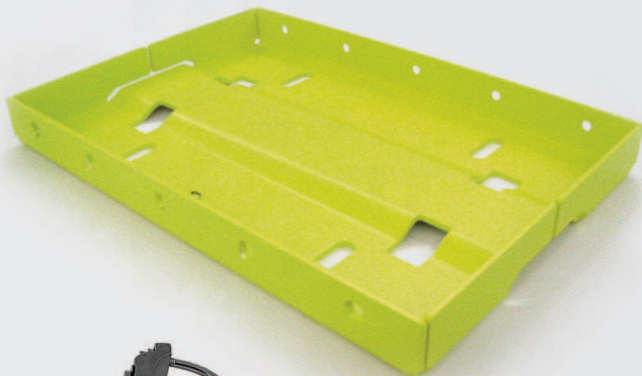


■ INSTALLATION OF ADVANCECALL™ BOX

1. Remove back plate by unscrewing the 10 screws on the side of the back plate.



Diagram 6



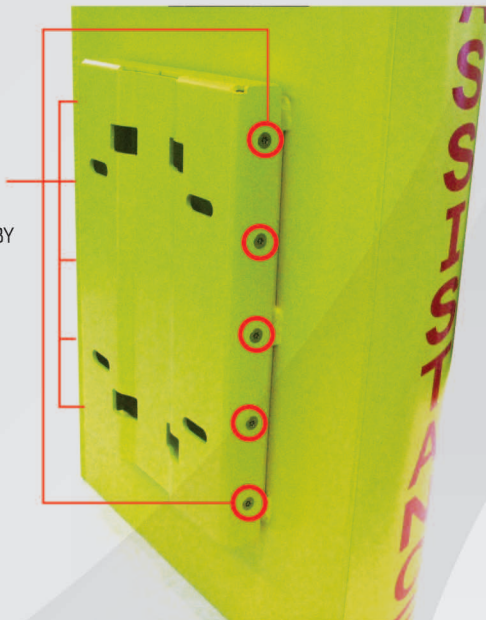
*CLAMPS
NOT INCLUDED

2. Place clamps and tighten plate against the pole where the AdvanceCall Box will be installed. Once it has been tightened place AdvanceCall Box onto plate and screw into place.



Diagram 7

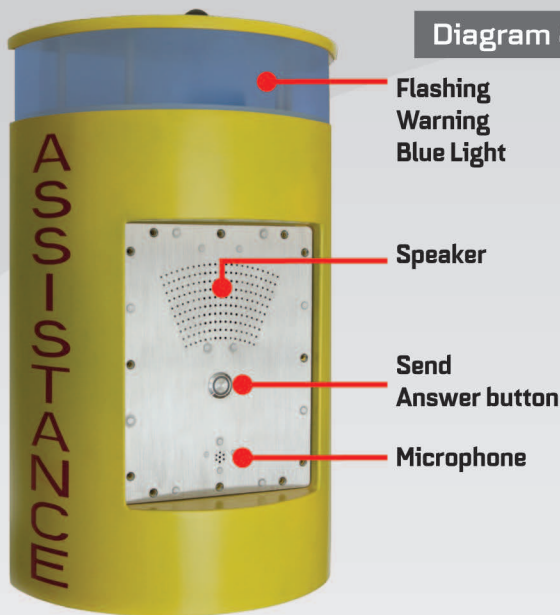
LOOSEN AND
TIGHTEN WITH
TOOL SUPPLIED BY
ADVANCETEC



NOTE! The AdvanceCall Box comes already already programmed. Once activated with your service provider the Call Box will be ready for use.



Diagram 8



■ OPERATING THE ADVANCECALL™ BOX

1. To make a call to the number programmed into the **AdvanceCall™ Box** press the **SEND** button and speak towards the microphone.
2. The call will end once the person receiving the call hangs up or cancels the call.



■ SPECIFICATIONS

Input/Output

- Input voltage 120 VAC 60Hz 15 W
- Output voltage 15 VDC 800mA

Audio Specifications

- Speaker impedance: 4 Ohms 10W
- Microphone: Eco Canceling Noise Canceling

Communication Specification

- Full Duplex Communication
- Automatic Start up
- Antenna Impedance: 50 Ohms

Environmental Specif

- Operational Temperature -20 to +60°C
- Storage Temperature -40 to +85°C
- Shock MIL-STD-810E METHOD 516.4 Proc. 1, 18 shocks 40 G half-sine 6-9 msec 18
- Shocks 2500g's, 0.00075-seconds pulse
- Vibration 2X-EIA (not tested electronically during vibration) Sine 20 - 2000Hz, 4G peak
- 1hr per axis - 3 axis [x, y, z] Random 20 - 2000Hz, 6G RMS; 1hr per axis - axis [x, y, z]



■ WARRANTY

Your product has a one-year limited warranty from date of purchase against defects in material and workmanship. Under this warranty, you may return a faulty product to AdvanceTec and AdvanceTec will either repair or replace the faulty product free of charge. To return a faulty product for repair or replacement, please call AdvanceTec in the USA at 305-623-3939 to obtain a Return Material Authorization number. If outside of the USA, contact your authorized AdvanceTec dealer for a Return Material Authorization. This warranty covers only defects in material or workmanship in normal use and not damage from negligent handling, misuse, charging of batteries other than those the charger was specified and designed to charge, or lack of proper care.

Important: Opening of the product will void this warranty. This warranty gives you specific legal rights. You may also have other rights, which vary from state to state.

OTHER THAN AS EXPRESSLY SET FORTH ABOVE, AdvanceTec Industries, Inc DOES NOT MAKE ANY EXPRESS OR IMPLIED WARRANTIES OR REPRESENTATIONS REGARDING THEIR PRODUCTS. ANY IMPLIED WARRANTIES OF MERCHANTABILITY, NONINFRINGEMENT, AND FITNESS FOR A PARTICULAR PURPOSE ARE EXPRESSLY EXCLUDED AND DISCLAIMED.

AdvanceTec will not be liable or responsible for any loss, damage, or injury caused by any failure of its products to operate properly or promptly.



Notes

[illegible]



1150 NW 163rd Drive, Miami, FL 33169
T: 305-623-3939 F: 305-623-3996

www.advancetec.com

